



TERTIARY EDUCATION COMMISSION

**Graduate Tracer Study
2011**

A Preliminary Report

February 2012

Table of Contents

List of Tables	ii
List of Figures	ii
List of Acronyms.....	iii
1. Preface.....	1
2. Background.....	1
3. Objectives of the Tracer Study.....	2
4. Methodology.....	3
5. Population and Sample Design.....	4
6. Survey Implementation.....	5
7. Coverage of this Preliminary Report.....	5
8. Graduates' Characteristics.....	6
9. Graduates' Economic Status.....	7
10. Graduates' Employment and Work.....	8
11. Graduates' Underemployment/Mismatch.....	11
12. Graduates' Unemployment.....	12
13. Conclusion.....	13
Annex.....	14
Tables.....	18

List of Tables

Table 1	Comparing Population, Sample and Respondents' Characteristics
Table 2	Graduates Current Activity with regard to paid work
Table 3	Time Taken to find a job
Table 4	Graduates in Full Time Employment, distributed by Programme of Study and Cohort (%)
Table 5	Distribution of Graduate's Employment by Occupation
Table 6	Distribution of Employed Graduate's by Field of Study and Occupation
Table 7	Graduates' Employment distributed by Sector
Table 8	Employed Graduates requiring at least a degree distributed by Programme of study and Cohort
Table 9	Employed Graduates requiring a degree in the relevant field of Study distributed by Programme of Study and Cohort
Table 10	Distribution of Unemployed graduates by Programme of Study and Cohort
Table 11	Unemployment and Underemployment Rates by Programme of Study

List of Figures

Figure 1	Distribution of Respondents by Age and Institution
Figure 2	Distribution of Respondents by Year of Graduation
Figure 3	Distribution of Respondents by Field of Study (%)
Figure 4	Distribution of Respondents Finding Employment in Less Than One Year by Year of Graduation (%)
Figure 5	Distribution of Respondents by Reasons for Time gap between Graduation and First Employment (%)

Figure 6 Distribution of Respondents by Gender and Sector of Employment (%)

Figure 7 Distribution of Respondents by level of Underemployment (%)

List of Acronyms

1.	Accounting/Inf Systems	-	Accounting with Information Systems
2.	Adm/Mgt/HRM	-	Administration/Management/Human Resource Management
3.	Agri	-	Agriculture
4.	Agriculture (spp. Agricultural Ext&Agri. Biotech.&crop prod.)	-	Agriculture with specialisation in Agricultural Extension/Agricultural Biotechnology/Crop Production
5.	Agriculture (spp. Land & Water Mgt)	-	Agriculture with specialisation in land & water management
6.	Agriculture Mgt	-	Agriculture with specialisation in Agricultural Management
7.	Agriculture/EVS	-	Agriculture with Environmental Science
8.	Avg	-	Average
9.	Biology/EVS	-	Biology with Environmental Science
10.	Chemical & Env Eng	-	Chemical and Environment Engineering
11.	Chemical & Sugar Eng	-	Chemical and Sugar Engineering
12.	Chemistry/EVS	-	Chemistry with Environmental Science
13.	Computer Science/Eng	-	Computer Science and Engineering
14.	Computer Science/Multi	-	Computer Science with Multimedia
15.	CPE	-	Certificate of Primary Education
16.	Eng	-	Engineering
17.	F	-	Female
18.	Horticulture (spp. Plt Biotechnolgy/Soilless Protected culture)	-	Horticulture with specialization in Plant Biotechnology/ Soilless Protected culture
19.	Horticulture /Business Mgt	-	Horticulture with Business Management
20.	HRM	-	Human Resource Management
21.	HSC	-	Higher School Certificate
22.	IT	-	Information Technology
23.	ICT	-	Information and Communication Technology
24.	ISCED	-	International Standard Classification of Education
25.	Law&Mgt	-	Law and Management
26.	M	-	Male
27.	MGI-	-	Mahatma Gandhi Institute

28.	Mgt/Mkg	-	Management with spec. in Marketing
29.	Mgt/spp Acc & Fin	-	Management specialisation in Accounting & Finance
30.	MPhil	-	Master in Philosophy
31.	NS	-	Not Specified
32.	PGCE	-	Post Graduate Certificate in Education
33.	PhD	-	Doctor in Philosophy
34.	PR/Communication	-	Personal Relations and Communication
35.	Prof	-	Professional
36.	Public Adm&Mgt	-	Public Administration & Management
37.	SBMF	-	School of Business Management and Finance
38.	SC	-	School Certificate
39.	SITE	-	School of Innovative Technologies and Engineering
40.	Software Eng	-	Software Engineering
41.	SS&Hum	-	Social Studies and Humanities
42.	SSDT	-	School of Sustainable Development and Tourism
43.	T	-	Total
44.	UoM	-	University of Mauritius
45.	UTM	-	University of Technology, Mauritius

Preface

The global economy is going through difficult times, as the debt problems of the Euro zone and the aftermath of the financial crisis in the United States impact adversely on growth prospects worldwide. Mauritius, having a small and open economy and being highly vulnerable to such external shocks, has started to re-engineer its economy and diversify into new growth poles so as to increase its resilience.

This new economic trajectory hinges on the availability of a critical mass of trained professionals, endowed with the right skills, knowledge and expertise to enable enterprises to take advantage of emerging opportunities when the world economy recovers. In this regard, the need to ensure the effectiveness of the higher education and training system in relation to the labour market assumes critical importance.

Tracer Studies constitute one form of empirical study for appropriately evaluating the output of the education and training system in relation to the labour market. They bring together certain basic types of information concerning the level of employment, unemployment and underemployment amongst graduates, the contemporary undergraduate experience and the correspondence between educational qualifications and required work skills, amongst others which put into perspective the contribution of the sector. They also provide indications of possible deficits in a given educational programme, such that the latter can be more closely aligned with the needs of the economy.

This Preliminary Report is restrictive in scope. It provides only partial information relating to the graduate labour market, pertaining to the level of employment, underemployment and unemployment as well as the extent of mismatch. A more in-depth analysis will be undertaken early in 2012 and will be the subject of another report.

Background

The success of the Mauritian economy is inextricably linked to the quality of its human resources. At a time when the country is undergoing a major restructuring towards services and knowledge-based growth, the need for having a critical mass of professionals to support existing and emerging economic sectors assumes high importance.

The country produces between 3,000 to 4,000 degree graduates annually. The key challenge is not just that these graduates are employed, but that their employment best utilises their education. A graduate with a degree in Law, for example, who finds employment as a clerk, is

not fully utilising his education. The major concern is not, therefore, about the employability of the graduates but the type of employment they gain and whether they have productive and well-paying jobs.

Tracer studies constitute one form of empirical study to appropriately evaluating the outcome of the tertiary education sector. By bringing together certain basic types of information concerning, amongst others, the level of employment, unemployment and underemployment amongst graduates, the correspondence between educational qualifications and employment and the contemporary undergraduate experience they can indicate possible deficits in a given educational programme and assist in better planning at both the institutional and national levels, so that academic provisions are more closely aligned with the needs of the economy.

This preliminary report has been specifically prepared within the context of finalizing the List of Indicative Priority Fields of Study (LIPFS) 2012/2013. Owing to time constraint, it is intended to provide only partial information gathered from the tracer study and is, accordingly, restrictive in scope. It gives a snapshot of the current state of the graduate labour market with respect to the level of employment, underemployment and unemployment by field of study as well as the relevance between qualifications and employment, without going into in-depth analysis. This will be the subject of another report.

The Graduate Tracer Study 2011 covers the two biggest tertiary education providers in the country namely the University of Mauritius (UoM) and the University of Technology, Mauritius (UTM), which together account for over three quarter of degree graduates produced locally. The output of private institutions and universities overseas has been deliberately omitted from the exercise owing to the absence of a population frame for these groups. Nonetheless, in an endeavour to get a full picture of the state of the graduate labour market, the preliminary findings of this report will be complemented by the Employers' Survey carried out by the Tertiary Education Commission (TEC) in 2010 to gauge employers' demand for graduates as well as projected graduate output for the next 3 years.

Objectives of the Tracer Study

The Graduate Tracer Study 2011 examines the relationship between tertiary education and the world of work. It is based on considerations of the experiences of the UoM and the UTM graduates. The main objectives of the Tracer Study are to

- a) investigate the transition process from higher education to work;
- b) shed light on the state of employment, unemployment and underemployment;

- c) analyse the relationships between higher education and work in a broad perspective which includes the fulfillment of personal goals such as job satisfaction and objective measurement like job position, income, job security and the type of work;
- d) find out what factors are important for professional success of graduates taking into account personal factors like gender, work motivation, acquired qualification during course of study and labour market conditions.

The Study is designed to provide relevant information, both quantitative and qualitative, to educational planners and policy makers to assist them to make informed decisions and fine-tune their strategies, in view of meeting the country's high-level and skilled human resource needs.

Methodology

The Study consisted of a mail questionnaire (*Annex 1*) used in a similar Study undertaken by the TEC in 2007, with some slight amendments brought to treat in a more elaborate manner the contribution of the programme of study to graduates' current employment. The Survey questionnaire comprised 36 questions, grouped into 3 broad themes as follows:

- (i) Issues related to the characteristics, socio-economic background and further studies of graduates
 - a. the characteristics and socio-economic background of graduates
 - b. the factors which induce the pursuit of further studies after graduating
 - c. the sources of financing for these further studies and the contribution of employers in graduate academic achievement
 - d. the role played by educational and socio-economic background of graduates in their movement up the educational ladder
- (ii) Issues related to the labour market experiences of graduates
 - a. the nature and extent of mismatch between graduates' career expectations and achievements
 - b. The transition from university to the labour market
 - c. the level of employment, unemployment and underemployment among graduates

- d. the characteristics and nature of the unemployed and underemployed graduates
 - e. nature and conditions of graduate employment
 - f. the occupational and sectoral distribution of graduate employment
 - g. employment and occupational mobility of graduates
 - h. factors impinging on graduates decisions to change jobs including the influence of educational and socio-economic characteristics on the earnings and career success of graduates
 - i. the extent of job satisfaction among graduates
- (iii) Issues related to the quality of tertiary education provision and their contribution to graduates' personal development
- a. the delivery system including the quality of instruction dispensed and the teaching and learning environment
 - b. the extent of inter-disciplinary learning
 - c. the contribution of tertiary education to the knowledge, skills and attitudes of graduates
 - d. the importance of work placement
 - e. the relevance of programmes to professional requirements

Population and Sample Design

The Survey targeted a random sample of 3,453 full-time degree graduates (1,515 male and 1,938 female) from the UoM (3,103) and the UTM (350), out of a graduate population of 7,188 over the period 2006 to 2010 (Table 1). The sample comprised about 50% of the graduates stratified by cohort and programme, gender and place of residence, from a list obtained from these institutions which provided details of names and addresses of graduates by field and year of graduation, encompassing some 95 programmes.

Survey Implementation

The Survey was launched in the third week of July 2011 for the UTM and end of July 2011 for the UoM, with the closing date set for end July 2011 and second week of August 2011 respectively. A questionnaire was sent by post to all the graduates concerned, together with a covering letter and a stamped addressed envelope for return, explaining the objectives of the Study. Follow-up letters were issued to non-respondents eight weeks after the initial mailing, on 12 September 2011. As a result of the first reminder, the response rate, which stood at only 18.5% initially, was increased to 43.6%, representing 20.9% of the population size. At the completion of the fieldwork in September 2011, the final number of returned and useable questionnaires amounted to 1,473, while 32 responses were received through phone calls from parents of graduates who were overseas, giving a total of 1,505 responses in all.

The responses were collated, coded, inputted, and analysed in Microsoft Excel. Some data cleaning was necessary where responses received were not clear or were not properly recorded.

Coverage of this Preliminary Report

For the purpose of this preliminary report, 7 questions out of the 36 contained in the questionnaire were processed, namely Questions 1, 2, 8, 9, 18, 19(a), 19 (b) and 20. These questions covered the following aspects:

- a) the name and sex of graduates;
- b) the qualifications awarded;
- c) the graduate's current activity with regard to paid work;
- d) the time taken to find employment after obtaining the first degree;
- e) graduate's employment history including occupation or post held and minimum qualification required.

The answers derived from the above questions would provide an indication of the level of graduates' employment, unemployment and underemployment by field, as well as the extent of mismatch in terms of the qualifications obtained by graduates and the areas in which they were working.

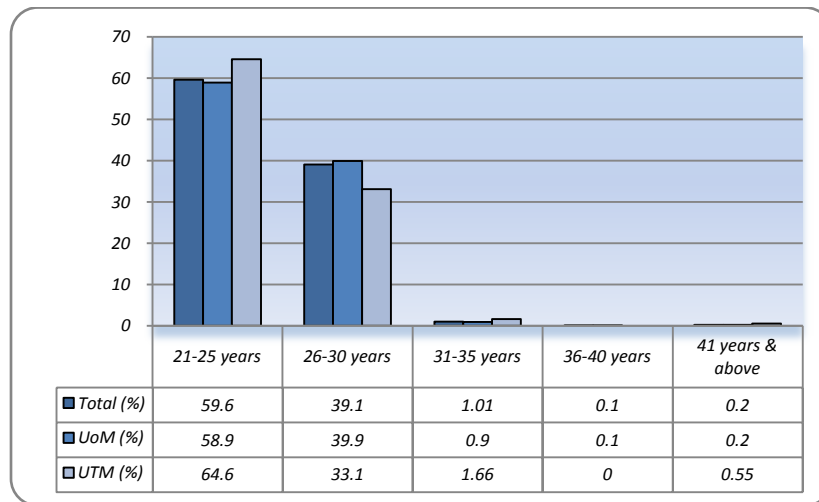
Graduates' Characteristics

Table 1 compares the characteristics of the population with that of the sample and the respondents by gender, year of graduation or cohort and faculty/school. A high degree of convergence exists between the respondents and the population characteristics indicating that the responses received were representative of the population.

Gender: A total of 1,505 graduates took part in the Survey, including 603 males (40.1%) and 902 females (59.9%). In the population, 57.3% of graduates were female and 42.7% male.

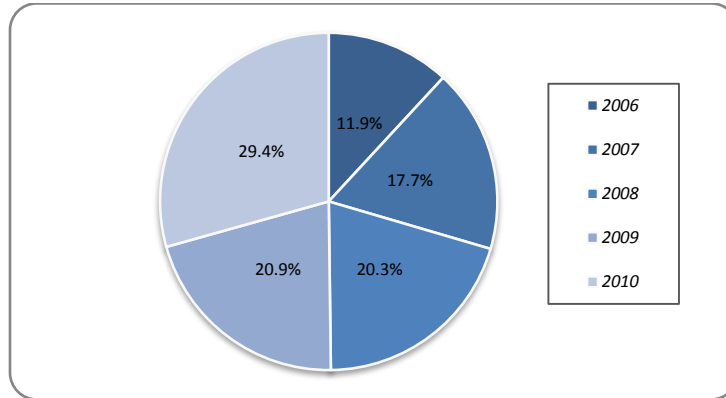
Age: The mean age of respondents stood at 25.1 years. A majority (59.6%) was in the age group 21 to 25 years, 39.1% between 26 to 30 years, as shown in Figure 1 below.

Figure 1: Distribution of Respondents by Age and Institution



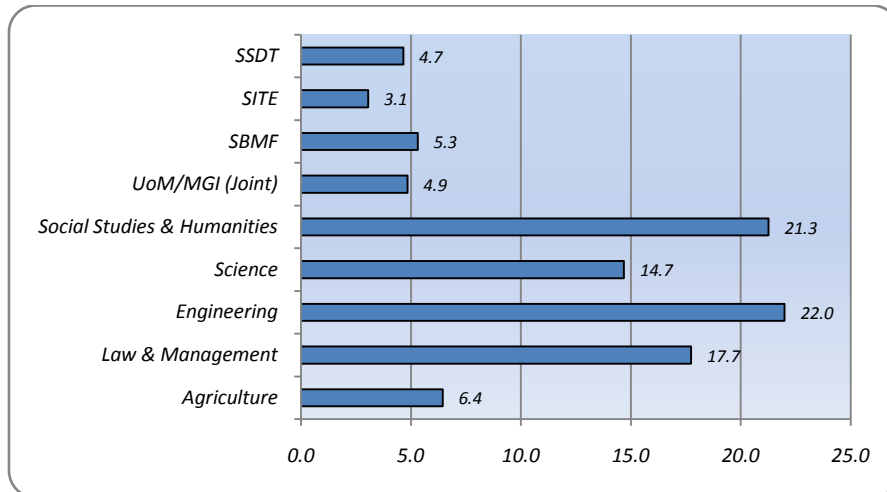
Distribution by Year of Graduation and Field: the composition of the respondents by year of graduation is shown in the pie chart below. As can be observed, the share of respondents tended to increase with time, as follows: 2006- 11.9%; 2007- 17.7%; 2008- 20.0%; 2009- 20.9%; 2010- 29.4%. This corresponded to their population shares of 15.1%, 17.3%, 19%, 21.6% and 26.9% respectively registered over the same period, reflecting the rising trend of enrolment in both institutions in the recent years.

Figure 2: Distribution of Respondents by Year of Graduation



Out of the 1,309 (87.0%) and 196 (13.0%) respondents from the UoM and the UTM respectively, the majority from the UoM was from the Faculty of Engineering (22.0%) while the majority of respondents from the UTM was from the School of Business Management and Finance (SBMF) (5.3%). The distribution of the respondents by faculty/school is shown in Figure 3.

Figure 3: Distribution of Respondents by Field of Study (%)



Graduates' Economic Status

According to the survey, 81.8% of respondents were working (Table 2), 79.2% were working full-time, 2.1% were working part-time but seeking full-time work, 0.3% were working part-time but not seeking full-time work and 0.2% was doing voluntary work. The employment distribution of

the graduates by cohort was as follows: 2006- 94.3%; 2007- 89.6%; 2008- 87.6%; 2009- 81.4%; 2010- 68.1%.

The findings also revealed that 16.8% of respondents were not working: 5.7% were undertaking further full-time studies either locally (3.8%) or overseas (1.9%), 0.3% were not working and were unavailable for paid work.

Some 10.8% of respondents, on the other hand, were not working and were looking for a job. Some 20.6% of respondents from the 2010 cohort were in this category; this higher than average share can be explained by the shorter time lapse between graduation and the conduct of the Study for the 2010 graduates compared to the other cohorts of graduates.

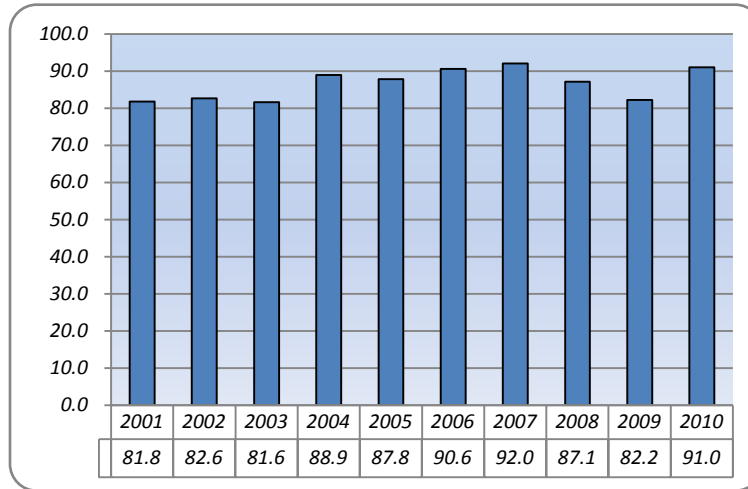
Graduates' Employment and Work

Time Taken by Graduate to Find a Job

Most companies do not offer employment to new graduates until the final examination results are known. Although it takes quite a while for a graduate to find employment, many start searching for employment way only after graduation. The Study revealed that in general, it took about 2 years for the near-totality of graduates (98.0%) to secure a job, irrespective of the field of study and gender (Table 3).

Using the tracer studies of 2007 and 2011, the time gap experienced by respondents between graduation and their first employment over the period 2001 to 2010 is depicted in Figure 4. It is noted that the time taken by graduates to find employment between the two studies had improved. Thus, on average 88.6% of the 2006-2010 graduates found employment within one year of graduation compared to 84.5% of the 2001-2005 graduates.

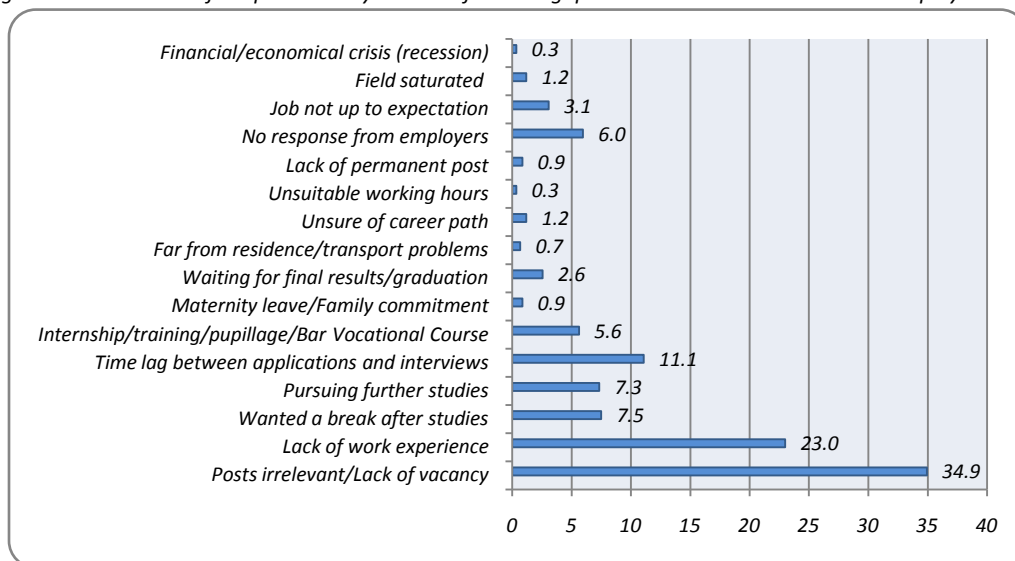
Figure 4: Distribution of Respondents Finding Employment in Less Than One Year by Year of Graduation (%)



Some fields of study command a higher demand on the labour market than others. Engineering field is one of these. According to the Study, 97.1% of engineering graduates at the UoM were able to find a job within one year of their graduation as opposed to 91.1% of their counterparts from the Law and Management Faculty, 86.7% from the Faculty of Social Studies and Humanities, 84% from the Faculty of Agriculture and 80.6% from the Faculty of Science. Similarly, at the UTM, 95.2% of School of Innovative Technologies and Engineering (SITE) graduates got a job in less than a year compared to 84.3% of SBMF graduates and 81.7% of School of Sustainable Development and Tourism (SSDT) graduates.

A number of reasons were given by respondents for explaining the time gap between their graduation and the first employment, as shown in the figure below:

Figure 5: Distribution of Respondents by Reasons for Time gap between Graduation and First Employment (%)



Graduates' Current Employment

It was observed that a total of 85.5% of the graduates were engaged in full time employment for the period 2006-2010 (Table 4).

The composition of the graduate employment was as follows: 5.6% were from the faculty Agriculture, 25.8% were from Engineering, 19.1% were from Law and Management, 3.8% were from joint UoM/MGI, 12.7% were from Science, 19.9% were from Social Studies and Humanities, 5.3% were from SBMF, 3.1% were from SITE and 4.6% were from SSDT.

Some 90.6% of Engineering graduates were in full-time employment as opposed to 75.3% of Agriculture graduates, 84.3% from Law and Management, 56.2% from joint UoM/MGI, 65.2% from Science, 73.8% from Social Studies and Humanities, 83.8% from SBMF, 87.0% from SITE and 72.9% from SSDT.

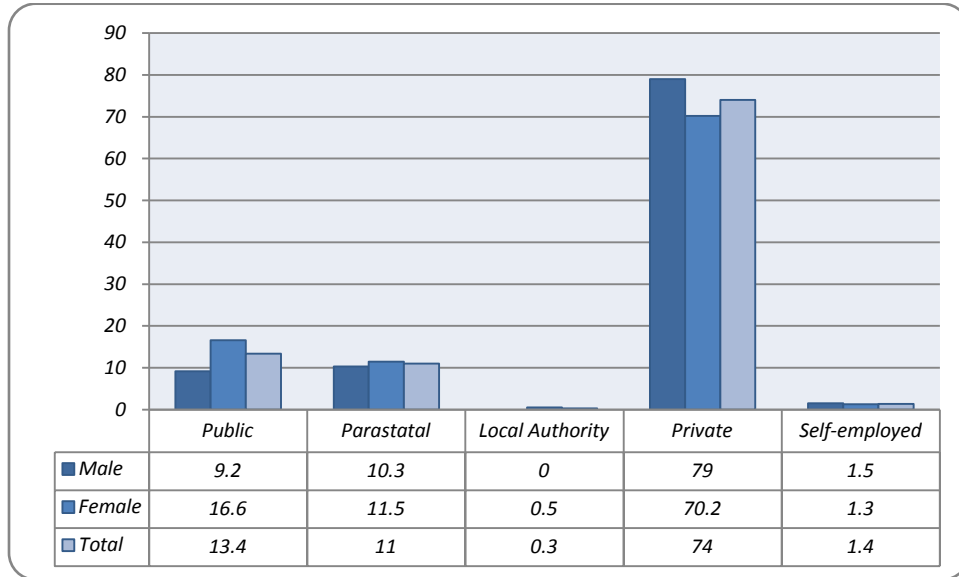
Over three quarter of jobs occupied by the graduates were concentrated in 7 broad groups of occupation, as follows: Teaching (22.7%), Administration/ Management (15.5%), IT profession (11%), Engineering (8.7%), Accounting (5.3%, Banking and Finance (4.8%) and Clerical (7.5%). Other occupations held by respondents related to Technician (3.6%), Marketing (3.6%) and Public Relations/ Communication (2.8%), amongst others (Tables 5 and 6).

Teaching constituted the single biggest source of employment for graduates from the faculties of Science (51%) and joint UoM/MGI (67.4%) and to a lesser extent Agriculture (17.5%). However, the trend with regard to graduate employment in teaching is taking a declining trend (2006- 26.9%, 2007- 29.8%, 2008- 23.3%, 2009- 19.1% and 2010- 17.6%).

Sector of Employment

The findings revealed that over the period 2006-2010, 74.0% of graduates were employed in private institutions (Table 7) and 24.7% in public institutions, compared with 59.2% and 39.6% respectively for the period 2001-2005. The private sector thus consolidated its position as the biggest provider of employment for graduates, while the public sector is slowly losing its hegemony. There has not been any significant improvement to graduates' self-employment which stood at 1.4% over 2006-2010 compared with 1.1% over 2001-2005. Lack of initial capital to start own business, lack of confidence and risk taking to venture into self employment and general parents' expectation to be supported after they have done their part in educating their children may be compelling reasons for the new graduates to seek a secured job as opposed to create their own business.

Figure 6: Distribution of Respondents by Gender and Sector of Employment (%)



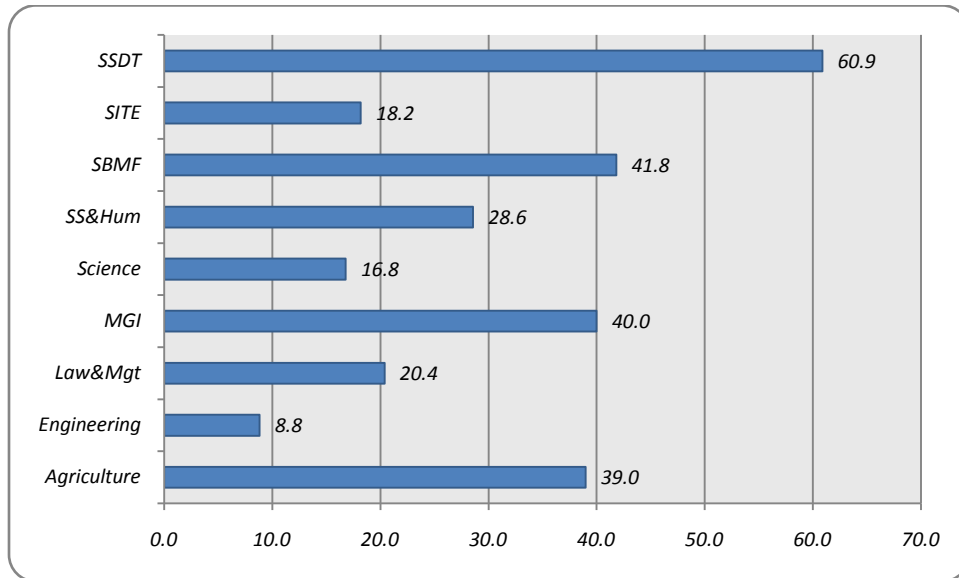
Graduates' Underemployment/Mismatch

Table 8 assesses the level of graduate underemployment by programme of study by examining the minimum qualifications required by graduates in their current employment. Overall, 23.1% of respondents were found to be underemployed as their jobs required less than a degree.

The level of underemployment varied by faculty/school; the highest rate being witnessed by SSDT graduates (60.9%) followed by SBMF (41.8%), Joint UoM/MGI graduates (40%), Agriculture graduates (39%), Social Studies and Humanities graduates (28.6%), Law & Management graduates (20.4%). Engineering (8.8%) and Science (16.8%) graduates, on the other hand, were the least affected. The level of underemployment, as expected, was lower amongst the earlier than latter cohorts as follows: 2006- 14.3%; 2007- 17.8%; 2008- 20.2%; 2009- 26.6%; and 2010- 31.7%, indicating that with time many of the graduates who are underemployed ended up being fully employed in the sense of finding a job which requires at least a degree.

Table 9 gives the graduates' underemployment rate by programme of study and cohort. As can be observed, the underemployment level affected certain groups of graduates more, in particular those who had studied Agriculture, Hindi and Indian Philosophy, Management, Joint Economics Degrees (with Management or Accounting), Banking and International Finance, Human Resource Management, History, Political Science as well as Tourism and Hospitality Management, amongst others.

Figure 7: Distribution of Respondents by level of Underemployment (%)



Graduates' Unemployment

The graduate unemployment rate has been calculated as the number of graduates not working and looking for a job over the total number of economically active graduates (defined as the total graduate population excluding those on full-time studies and those not working and not looking for a job). As per this definition, the graduate unemployment rate stood at 11.7%. As expected, the unemployment rate was higher amongst female (13.5%) than male (6.6%) and decreased with time, as the following distribution of unemployed graduates by cohort shows 2006-1.8%; 2007- 5.5%; 2008 - 7.4%, 2009 - 11.5% and 2010 - 23.2%.

Table 10 gives the distribution of unemployed graduates by faculty/school, programme of study and cohort. The highest unemployment rate was experienced by joint UoM/MGI graduates (30.9%) followed by those from Agriculture (17%), Social Studies & Humanities (16.8%), Science (15.5%), SSDT (12.9%), SBMF (9.3%), SITE (8.7%), Law & Management (7.2%) and Engineering (3.5%). High unemployment rate were experienced by graduates in Agriculture, Psychology, History, Hindi, Indian Philosophy and Political Science, amongst others.

Table 11 summarises the unemployment and underemployment rates amongst the graduates.

Conclusion

The report has put into perspective the level of underemployment and unemployment amongst graduates as well as the extent of mismatch between their qualifications and employment. The findings provide ample data to assist in finalizing the LIPFS, though the latter includes only 35 out of 95 programmes surveyed by the tracer study. On the whole, the 2010 graduate cohort seems the most affected in every respect and justifiably so given the shorter time lapse between their graduation and the conduct of this study compared to the other cohorts. Similarly, some graduates, like those in Agriculture, tend to be most affected than others owing to their fields of study not being in much demand. The higher unemployment and underemployment rates prevailing for those graduates cannot be attributed to any single reason, however, though some transitional factors would tend to affect them all, notwithstanding the current present global recession which is likely to impact adversely on the employment situation at home.

Dear Graduate,

The Tertiary Education Commission(TEC), in collaboration with the University of Mauritius (UoM) and the University of Technology,Mauritius (UTM), is undertaking a study regarding the type of work, further study or other activity you are/were involved in since you completed your first degree programme. The information requested will assist us in planning future educational needs. Results of this study will only be presented in summary form and individual responses will be kept "**strictly confidential**".

We would, highly appreciate it if you could kindly complete the questionnaire and return it to the TEC (address below).

Thank you for your collaboration .

A. General

1. Surname: Forename(s):..... Maiden Name(if applicable):.....

2. Sex : Male Female 3. Age :

4.Marital Status:Married Not Married

5. Level up to which your parents have studied :
 None Primary Secondary Tertiary
 Father
 Mother

6. Father's occupation: Mother's occupation:

7. No. of Brother(s):..... Sister(s) :.....

B. Educational

8. Full Title of degree and Year awarded:.....

9. Please state class of degree conferred: 1st 2:1 2:2 3rd

10. Please state (if any) area of specialisation:.....

11. Do you possess other tertiary-level qualification?
 Yes No

If yes, please give details below:

Title of Award (in full)	Institution(s)	Period enrolled		Attendance FT/PT/DE*	Source of funding
		From	To		

*FT = Full-time, PT =Part-time, DE= Distance Education

C. Further Study

12. Are you currently undertaking further studies? Yes No

13. If **No**, skip to **question 14**. If **yes**, please give details as follows:

Title of Programme(in full)	Institution(s)	Period enrolled		Attendance FT/PT/C/DE*	Source of funding
		From	To		

*FT = Full-time, PT =Part-time, C= Correspondence and DE= Distance Education

14 (a). Do you intend to upgrade your qualification in the future? Yes No

If Yes

(a) Kindly mention any constraint (if any) that is preventing you from pursuing further studies presently?

.....

(b) What Mode of study would you prefer?

Full Time Part Time Distance Education

15. If you are currently studying or are planning to pursue further studies, up to what level do you plan to study?

Masters PhD PostDoctoral Others (please specify):.....

16. Could you please state the main reason why you want to pursue further studies?

.....

D. Activity

17. What type of jobs were you contemplating when you decided to do your degree at the UoM/UTM?

.....

18. Which one of the following best describes your current activity with regard to paid work?

Working full-time	<input type="checkbox"/>
Working part-time but seeking full-time work	<input type="checkbox"/>
Working part-time but not seeking full-time work	<input type="checkbox"/>
Working on Contractual basis	<input type="checkbox"/>
Self - employed	<input type="checkbox"/>
Not working and looking for a job	<input type="checkbox"/>
Not working and unavailable for paid work	<input type="checkbox"/>
Studying Full-Time	<input type="checkbox"/>
Others, please specify:	

E. Employment History

19(a) How long did it take to find employment after obtaining your first degree? mths

(b) Is there any specific reason(s) for the time gap between obtaining your degree and your first employment.

.....

20. Employment history (since obtaining first degree to-date):

Name of Employer*	Period employed		Post held/Job Title	Minimum Qualification required	Reasons for leaving job (where applicable)
	From	To			
1					
2					
3					
4					

* If self-employed, please state area of activity

F. Current Employment

21. How did you come to know about your current job?

- Internal Promotion
- Newspaper advertisement
- Vacancy notice
- Internet
- Private Networking
- Employment Service
- Job Fair
- Other(please specify)

22. Any specific attributes required for the job:.....

23. Gross monthly salary (to the nearest '000') (Rs/month):.....

24. Please list any other benefits attached to the job:

25. Location of place of work: District:

26. Number of employees (approximately)
 Less than 10 51 to 200
 11 to 50 over 200

27. Nature of work performed (in brief):

28. Do you face any major problem related to your job? Yes No

If yes, please elaborate:

29. If you are self-employed, is there any reason for your choice?

30. How would you rate the contribution of your programme of study at the UoM/UTM, relating to:

(Tick as appropriate)	Very high	High	Medium	Low	Very Low
Organisational Skills	<input type="checkbox"/>	<input type="checkbox"/>	<input type="checkbox"/>	<input type="checkbox"/>	<input type="checkbox"/>
Problem solving	<input type="checkbox"/>	<input type="checkbox"/>	<input type="checkbox"/>	<input type="checkbox"/>	<input type="checkbox"/>
Leadership skills	<input type="checkbox"/>	<input type="checkbox"/>	<input type="checkbox"/>	<input type="checkbox"/>	<input type="checkbox"/>
Ability to work independently	<input type="checkbox"/>	<input type="checkbox"/>	<input type="checkbox"/>	<input type="checkbox"/>	<input type="checkbox"/>
Creativity/Creative thinking	<input type="checkbox"/>	<input type="checkbox"/>	<input type="checkbox"/>	<input type="checkbox"/>	<input type="checkbox"/>
Negotiating skills	<input type="checkbox"/>	<input type="checkbox"/>	<input type="checkbox"/>	<input type="checkbox"/>	<input type="checkbox"/>
Team work/Team orientation	<input type="checkbox"/>	<input type="checkbox"/>	<input type="checkbox"/>	<input type="checkbox"/>	<input type="checkbox"/>
Time management	<input type="checkbox"/>	<input type="checkbox"/>	<input type="checkbox"/>	<input type="checkbox"/>	<input type="checkbox"/>
Initiative/Risk taking	<input type="checkbox"/>	<input type="checkbox"/>	<input type="checkbox"/>	<input type="checkbox"/>	<input type="checkbox"/>
Writing skills	<input type="checkbox"/>	<input type="checkbox"/>	<input type="checkbox"/>	<input type="checkbox"/>	<input type="checkbox"/>
Communication Skills/Interpersonal skills	<input type="checkbox"/>	<input type="checkbox"/>	<input type="checkbox"/>	<input type="checkbox"/>	<input type="checkbox"/>
Computer Skills	<input type="checkbox"/>	<input type="checkbox"/>	<input type="checkbox"/>	<input type="checkbox"/>	<input type="checkbox"/>
Job Specific skills	<input type="checkbox"/>	<input type="checkbox"/>	<input type="checkbox"/>	<input type="checkbox"/>	<input type="checkbox"/>
Technical Knowledge	<input type="checkbox"/>	<input type="checkbox"/>	<input type="checkbox"/>	<input type="checkbox"/>	<input type="checkbox"/>
Decision-making	<input type="checkbox"/>	<input type="checkbox"/>	<input type="checkbox"/>	<input type="checkbox"/>	<input type="checkbox"/>
Entrepreneurship skills	<input type="checkbox"/>	<input type="checkbox"/>	<input type="checkbox"/>	<input type="checkbox"/>	<input type="checkbox"/>
Ability to work under pressure	<input type="checkbox"/>	<input type="checkbox"/>	<input type="checkbox"/>	<input type="checkbox"/>	<input type="checkbox"/>

31. How relevant was your programme of study at the UoM/UTM to your present job?

Very much Much A little Not at all

32. Which of the following represent strengths and weaknesses of the UoM/UTM programme that you attended? (Tick as appropriate)

	Strength <input type="checkbox"/>	Weakness <input type="checkbox"/>	Does not apply <input type="checkbox"/>
◆ Range of modules offered	<input type="checkbox"/>	<input type="checkbox"/>	<input type="checkbox"/>
◆ Number of optional modules in relation to the number of compulsory (core) modules	<input type="checkbox"/>	<input type="checkbox"/>	<input type="checkbox"/>
◆ Student workload	<input type="checkbox"/>	<input type="checkbox"/>	<input type="checkbox"/>
◆ Teaching Quality	<input type="checkbox"/>	<input type="checkbox"/>	<input type="checkbox"/>
◆ Inter-disciplinary learning	<input type="checkbox"/>	<input type="checkbox"/>	<input type="checkbox"/>
◆ Facilities	<input type="checkbox"/>	<input type="checkbox"/>	<input type="checkbox"/>
◆ Research Capacity	<input type="checkbox"/>	<input type="checkbox"/>	<input type="checkbox"/>
◆ Labor Market relevance/labor market adaptability	<input type="checkbox"/>	<input type="checkbox"/>	<input type="checkbox"/>
◆ Industry Linkages	<input type="checkbox"/>	<input type="checkbox"/>	<input type="checkbox"/>
◆ Cost			
◆ Other strengths/weaknesses(pl. specify):			

33. Any other strengths/weaknesses concerning your programme of study at the UoM/UTM not covered above, you want to mention?

.....

.....

.....

34. How satisfied are you with your current job?

Very much Much A little Not at all

35. Do you intend to stay in the same job/profession?

Yes No

If no, why?

.....

.....

.....

36. Any other comments concerning your experience at the UoM/UTM:

.....

.....

.....

.....

Please return completed questionnaire to:

**The Head, Research & Planning Division,
Tertiary Education Commission
Redit**

Table 1: COMPARING POPULATION, SAMPLE AND RESPONDENTS' CHARACTERISTICS								
	POPULATION		SAMPLE		RESPONDENTS		SHARE OF RESPONDENTS IN POPULATION	SHARE OF RESPONDENTS IN SAMPLE
	No. (A)	(% Share)	No. (B)	(% Share)	No. (C)	(% Share)	(% Share) (C/A)	(% Share) (C/B)
GENDER								
Male	3067	42.7	1515	43.9	603	40.1	19.66	39.8
Female	4121	57.3	1938	56.1	902	59.9	21.89	46.5
Total	7188	100	3453	100	1505	100	20.94	43.6
YEAR OF GRADUATION								
2006	1088	15.1	543	15.7	179	11.9	16.5	33.0
2007	1245	17.3	700	20.3	267	17.7	21.4	38.1
2008	1369	19.0	779	22.6	301	20.0	22.0	38.6
2009	1550	21.6	686	19.9	315	20.9	20.3	45.9
2010	1936	26.9	745	21.6	443	29.4	22.9	59.5
INSTITUTION/FACULTY/SCHOOL								
University of Mauritius (UoM)	6488	90.3	3103	89.9	1309	87.0	20.2	42.2
Agriculture	319	4.4	192	5.6	97	6.4	30.4	50.5
Law & Management	2005	27.9	773	22.4	267	17.7	13.3	34.5
Engineering	1850	25.7	877	25.4	331	22.0	17.9	37.7
Science	751	10.4	431	12.5	221	14.7	29.4	51.3
Social Studies & Humanities	1333	18.5	699	20.2	320	21.3	24.0	45.8
UoM/MGI (Joint)	230	3.2	131	3.8	73	4.9	31.7	55.7
University of Technology, Mauritius (UTM)	700	9.7	350	10.1	196	13.0	28.0	56.0
SBMF	251	3.5	126	3.6	80	5.3	31.9	63.5
SITE	213	3.0	107	3.1	46	3.1	21.6	43.0
SSDT	236	3.3	118	3.4	70	4.7	29.7	59.3

Table 2: Graduates Current Activity with regard to paid work																										
Current position	UoM & UTM		Gender		UoM		UTM		UoM								UTM					Cohort				
	No.	%	M	F	M	F	M	F	Faculty								School									
									Agri	Eng	Law & Mgt	MGI	Science	SS & Hum	Total	SBMF	SITE	SSTD	Total	2006	2007	2008	2009	2010		
	%	%	%	%	%	%	%	%	%	%	%	%	%	%	%	%	%	%	%	%	%	%	%			
WORKING	1231	81.8	86.7	77.6	85.5	78.4	93	79.2	75.3	92.1	87.6	64.4	70.1	77.5	1062	81.1	87.5	91.3	81.4	169	86.2	94.3	89.6	87.6	81.4	68.1
Working full-time (inc. working on contractual basis and self-employed)	1192	79.2	84.6	74.7	83.9	75.6	88.0	76.0	75.3	91.2	85.8	57.5	66.1	74.7	1031	78.8	86.3	87	74.3	161	82.1	93.1	88.8	84.9	76.9	65.2
Working part-time but seeking full-time work	31	2.1	1.5	2.4	1.2	2.4	3.0	3.1	-	0.9	1.5	6.8	3.2	1.9	25	1.9	1.3	4.35	4.3	6	3.1	1.1	0.7	2.3	3.5	2.0
Working part-time but not seeking full-time work	5	0.3	0.7	0.1	0.4	0.1	2.0	-	-	-	0.4	-	-	0.6	3	0.2	-	-	2.9	2	1.0	-	-	-	0.6	0.7
Voluntary Work	3	0.2	-	0.3	-	0.4	-	-	-	-	-	-	0.9	0.3	3	0.2	-	-	-	-	-	-	-	0.3	0.3	0.2
NOT WORKING	253	16.8	11.9	20.1	13.1	20.3	6	17.7	21.6	6.9	12.0	30.1	29.0	21.3	230	17.6	10	8.7	15.7	23	11.7	5.1	9.3	12.4	16	29.9
Not working and looking for a job	162	10.8	6.6	13.5	6.8	13.5	6.0	13.5	15.5	3.3	6.7	28.8	12.7	15.6	143	10.9	8.8	8.7	11.4	19	9.7	1.7	5.2	7.0	10.6	20.6
Not working and unavailable for paid work	5	0.3	0.3	0.3	0.4	0.2	-	1.0	1.0	-	-	-	1.4	-	4	0.3	1.3	-	-	1	0.5	-	-	0.7	0.3	0.5
Studying Full Time	57	3.8	3.2	4.2	3.8	4.6	-	1.0	4.1	1.5	3.4	-	12.2	3.4	56	4.3	-	-	1.4	1	0.5	1.1	2.2	2.3	3.8	6.8
Studying Abroad	29	1.9	1.8	2.0	2.2	2.0	-	2.1	1.0	2.1	1.9	1.4	2.7	2.2	27	2.1	-	-	2.9	2	1.0	2.3	1.9	2.3	1.3	2.0
OTHERS	21	1.4	1.3	1.4	1.4	1.2	1	3.1	3.1	0.9	0.4	5.5	0.9	1.25	17	1.3	2.5	-	2.9	4	2.0	0.6	1.1	-	2.6	2.0
NS	21	1.4	1.3	1.4	1.4	1.2	1.0	3.1	3.1	0.9	0.4	5.5	0.9	1.3	17	1.3	2.5	-	2.9	4	2.0	0.6	1.1	-	2.6	2.0
Total	1505	100	100	100	100	100	100	100	100	100	100	100	100	100	1309	100	100	100	100	196	100	100	100	100	100	100

NS-Not Specified

Table 3: Time Taken to find a job

Time Taken	UoM & UTM		Gender		UoM		UTM		UoM								UTM				Cohort					
	Total				UoM		UTM		Faculty								School									
	No.	%	M	F	M	F	M	F	Agri	Eng	Law & Mgt	MGI	Science	SS & Hum	Total	SBMF	SITE	SSDT	Total	2006	2007	2008	2009	2010		
			%	%	%	%	%	%	%	%	%	%	%	%	No.	%	%	%	No.	%	%	%	%	%		
Less than 1 mth	237	18.2	20.3	16.7	20.7	17.5	18.5	10.0	6.2	27.5	25.5	-	11.8	14.8	212	18.8	7.1	28.6	13.3	25	14.5	21.3	19.9	21.5	14.6	16.3
Less than 3 mths	596	45.8	52.5	41.1	51.7	41.9	56.5	33.8	25.9	64.1	54.7	9.1	32.9	38.5	517	45.8	44.3	71.4	30.0	79	45.9	51.9	52.6	45.6	43.8	40.4
Less than 6 mths	880	67.6	75.8	61.8	75.5	62.4	77.2	57.5	49.4	85.0	74.5	43.6	53.5	60.7	763	67.6	68.6	88.1	53.3	117	68.0	70.0	75.7	64.8	64.4	66.0
Less than 12 mths	1148	88.2	92.2	85.4	92.2	86.2	92.4	78.8	84.0	97.1	91.1	70.9	80.6	86.7	1000	88.6	84.3	95.2	81.7	148	86.0	90.6	92.0	87.0	82.2	91.0
Less than 2 yrs	1276	98.1	99.1	97.2	98.9	97.2	100	97.5	96.3	99.7	97.2	94.5	98.2	97.4	1106	97.9	100	100	96.7	170	98.8	96.9	97.6	96.7	98.6	100.0
More than 2 yrs	1301	100	100	100	100	100	100	100	100	100	100	100	100	100	1129	100	100	100	100	172	100	100	100	100	100	-

Table 4: Graduates* in Full Time Employment, distributed by Programme of Study and Cohort (%)

Field of Study	2006	2007	2008	2009	2010	Total
	%	%	%	%	%	%
Accounting (minor Finance)	-	-	100	100	87.5	94.1
Accounting minor Information Systems	-	-	100	-	-	100
Accounting with Business	-	-	-	66.7	-	80.0
Accounting with Finance	100	100	-	100	-	100
Accounting with Information Systems	100	100	100	87.5	-	95.0
Agricultural Biotechnology	-	-	100	100	50.0	73.7
Agriculture sp Agribusiness	-	80.0	-	80.0	-	81.8
Agriculture sp Aquaculture	-	-	-	100	55.6	69.2
Agriculture sp Organic Farming	-	100	-	-	-	100
Agriculture with Natural Resource Mgt	-	-	100	-	-	100
Agriscience & Technology	-	100	100	-	25.0	66.7
Banking & International Finance	-	85.7	90	100	-	93.1
Biology	100	90.0	89	75.0	42.9	81.1
Biology minor Aquatic and Environmental Sciences	-	100	-	-	-	100
Biology minor Environmental Protection	-	-	-	-	-	0.0
Biology minor Environmental Studies	-	100	-	-	-	100
Business Economics with Information Systems	-	100	100	80.0	80.0	90.0
Business Informatics	100	100	100	-	-	100
Business Information Systems	100	100	100	100	-	100
Chemical & Environmental	100	100	67	100	80.0	93.1
Chemical & Renewable Energy	-	-	-	-	-	100
Chemistry	100	100	63	71.4	80.0	81.8
Chemistry with Business Mgt	100	-	-	-	-	100
Civil Engineering	100	100	88	100	-	96.4
Computer Science & Eng	100	100	100	100	-	100
Computer Science with Multimedia	100	-	-	-	-	100
Computer Science with Network security	-	100	100	-	-	100
Economics	100	100	50	100	80.0	88.2
Economics with Accounting	-	-	100	100	-	100
Economics with Management	-	-	100	100	-	100
Economics& Finance	100	100	100	66.7	-	92.3
Electrical & Communication	-	100	-	-	-	100
Electrical & Electronic	100	100	100	100	87.5	96.4
Electronics&Communication	-	100	-	100	-	100
Electronics&Computer Science	100	-	100	100	-	100
English	100	87.5	88	33.3	71.4	80.0
Finance	100	80.0	83	80.0	80.0	84.6
Finance (Minor:Law)	-	-	-	100	-	100
Finance with Law	100	100	100	100	-	100
Fine Arts	-	100	-	66.7	-	87.5
Food Science & Technology	-	-	100	100.0	-	100
Food Science with Home Economics	100	-	86	-	-	90.0
Food Science with Nutrition	-	-	-	-	100	100
French	100	100	100	25.0	50.0	82.4
Hindi	100	33.3	67	75.0	42.9	66.7
History with Heritage Studies	-	-	-	-	-	0.0
History with International Relations	-	100	86	66.7	37.5	66.7
History with Social Studies	-	80.0	25	60.0	42.9	52.4
HRM	-	-	-	95.5	84.6	89.6
ICT	100	100	100	100	100	100
Indian Philosophy	-	77.8	-	-	42.9	62.5
Information Systems	-	100	100	90.0	60.0	89.7
Information Technology	100	83.3	67	100	100	92.0
Information Technology Enabled Services	-	-	83	33.3	-	66.7
Joint Humanities	100	100	83	50.0	77.8	79.2
Law	75.0	100	100	60.0	100.0	83.3

Table 4: Graduates* in Full Time Employment, distributed by Programme of Study and Cohort (%) (cont.)

Field of Study	2006	2007	2008	2009	2010	Total
	%	%	%	%	%	%
Law&Mgt	100	100	100	100	85.7	95.5
Management	85.7	90.9	78	100	81.0	84.6
Manufacturing	-	100	-	-	-	100
Marathi	-	-	-	-	50.0	50.0
Marine Science & Tech	-	-	-	-	37.5	37.5
Mathematics	100	100	100	100	80.0	92.6
Mathematics with Computer Science	75.0	100	100	100	75.0	88.9
Mechanical	100	100	100	100	83.3	95.8
Mechatronics	100	100	100	80.0	100	95.2
Medical science	-	100	-	-	100	100
Medicine	-	-	-	100	-	100
Mgt with Finance	-	100	100	100	100	100
Mgt with Information Systems	-	100	83	66.7	100	86.7
Mkg Mgt	-	-	-	100	100	100
Molecular Biology	-	100	-	-	-	100
Occupational Health & Safety Mgt	-	-	-	50.0	71.4	63.6
Physics	100	100	100	66.7	-	76.5
Physics with Computing	100	100	100	66.7	100	88.9
Physics with Electronics	-	100	100	100	0.0	72.7
Physiotherapy	-	-	43	100	57.1	56.3
Political Science	-	-	75	40.0	50.0	53.3
Production & Operations Mgt	-	-	100	100	100	100
Psychology	-	-	100	-	33.3	44.4
Public Adm&Mgt	100	-	-	-	-	100
Social Science with sp. Political Science	100	100	100	-	-	100
Social Science with sp. Psychology	80.0	80.0	100	-	-	81.8
Social Science with sp. Sociology	100	100	-	-	-	88.9
Social Work	-	-	-	80.0	-	80.0
Sociology	-	-	100	100	71.4	86.7
Software Eng	83.3	100	100	100	100	94.4
Statistics with Computer Science	-	100	100	100	100	100
Statistics with Economics	-	-	100	100	-	100
Tamil	-	-	-	-	-	0.0
Telegu	-	-	-	-	100	100
Textile &Fashion Design	100	100	100	57.1	100	88.9
Tourism&Hospitality Mgt	100	100	80	91.7	73.9	82.4
Tourism,Leisure & Recreational Mgt	-	71.4	100	75.0	-	75.0
Urdu	-	-	-	60.0	36.4	43.8
Total	97.0	93.7	89.8	83.6	73.5	85.5

Table 5 : Distribution of Graduate's Employment by Occupation																										
Current Occupation	UoM & UTM				UoM				UoM								UTM					Cohort				
	Total		Gender		UoM		UTM		Faculty								School					Cohort				
	No.	%	M	F	M	F	M	F	Agri	Eng	Law & Mgt	MGI	Science	SS & Hum	Total	SBMF	SITE	SSDT	Total	2006	2007	2008	2009	2010		
			%	%	%	%	%	%	%	%	%	%	%	%	%	No.	%	%	%	No.	%	%	%	%	%	
Accounting	60	5.3	5.4	5.3	5.5	5.2	5.0	6.0	1.6	0.7	18.2	2.3	0.7	3.6	52	5.3	6.7	2.9	5.8	8	5.4	4.1	6.7	5.4	5.1	5.1
Adm/Mgt/HRM	174	15.5	15.8	15.3	14.0	13.7	25.0	28.4	7.9	7.6	30.4	2.3	7.7	13.9	135	13.8	36.7	8.6	26.9	39	26.5	11.7	13.8	14.6	18.3	17.3
Banking/Finance	54	4.8	4.4	5.1	3.7	5.0	7.5	6.0	-	-	9.8	-	1.4	9.4	44	4.5	10.0	2.9	5.8	10	6.8	2.1	5.8	7.5	5.1	2.9
Clerk	84	7.5	4.0	10.1	4.2	9.2	2.5	17.9	6.3	1.7	9.8	18.6	3.5	12.1	70	7.2	16.7	2.9	5.8	14	9.5	4.8	7.6	7.5	10.2	5.9
IT Professional	124	11.0	14.8	8.3	13.2	8.3	22.5	7.5	-	32.4	1.4	2.3	2.1	-	101	10.3	-	62.9	1.9	23	15.6	14.5	8.4	12.9	11.5	9.2
Textile/Fashion Designer	11	1.0	0.4	1.4	0.5	1.6	-	-	-	3.8	-	-	-	-	11	1.1	-	-	-	-	-	1.4	1.3	0.4	0.9	1.1
Engineer	98	8.7	15.6	3.6	18.7	4.0	-	-	-	33.4	0.5	-	-	-	98	10.0	-	-	-	-	-	14.5	8.4	7.9	8.1	7.4
Law/Legal	10	0.9	0.4	1.2	0.5	1.4	-	-	-	-	4.7	-	-	-	10	1.0	-	-	-	-	-	2.1	1.3	0.8	0.4	0.4
Marketing	40	3.6	5.4	2.2	5.0	2.3	7.5	1.5	11.1	1.0	5.1	-	5.6	1.8	33	3.4	6.7	-	5.8	7	4.8	2.8	2.7	2.9	3.4	5.5
Medical & Health Related	29	2.6	2.1	3.0	1.0	2.3	7.5	9.0	-	0.7	-	-	9.8	0.4	17	1.7	-	-	23.1	12	8.2	1.4	1.3	2.5	1.7	4.8
Research Officer/ Assistant	11	1.0	1.0	0.9	1.2	1.0	-	-	4.8	-	-	4.7	0.7	2.2	11	1.1	-	-	-	-	-	0.7	0.4	0.8	1.3	1.5
Scientific Officer/Lab Assistant	8	0.7	0.8	0.6	1.0	0.7	-	-	-	0.7	-	-	4.2	-	8	0.8	-	-	-	-	-	0.7	0.4	-	0.9	1.5
Teacher/Lecturer	255	22.7	16.8	27.1	18.2	28.7	10.0	13.4	17.5	7.9	8.9	67.4	51.0	37.2	238	24.4	1.7	14.3	21.2	17	11.6	26.9	29.8	23.3	19.1	17.6
Technician	40	3.6	3.5	3.6	4.2	4.0	-	-	22.2	3.4	0.5	-	9.1	0.9	40	4.1	-	-	-	-	-	3.4	3.6	4.2	4.7	2.2
Agricultural Officer	2	0.2	0.2	0.2	0.2	0.2	-	-	3.2	-	-	-	-	-	2	0.2	-	-	-	-	-	-	0.9	-	-	-
Social Worker	10	0.9	0.4	1.2	0.5	1.4	-	-	1.6	-	-	-	-	4.0	10	1.0	-	-	-	-	-	1.4	0.9	0.8	1.3	0.4
PR/Communication	31	2.8	2.3	3.1	1.5	2.8	6.3	6.0	1.6	0.7	0.9	2.3	0.7	6.7	22	2.3	11.7	2.9	1.9	9	6.1	2.1	2.2	1.7	2.1	5.1
Environmental Officer	6	0.5	0.4	0.6	0.5	0.7	-	-	3.2	1.0	-	-	0.7	0.0	6	0.6	-	-	-	-	-	-	0.4	0.4	0.4	1.1
Other Professional	23	2.0	2.1	2.0	2.5	2.3	-	-	6.3	2.8	2.8	-	0.7	1.8	23	2.4	-	-	-	-	-	2.1	1.8	2.1	1.3	2.9
Consultant	16	1.4	1.2	1.6	1.5	1.7	-	-	-	1.0	3.3	-	0.7	2.2	16	1.6	-	-	-	-	-	1.4	0.4	2.5	0.4	2.2
Quality Officer	10	0.9	0.8	0.9	0.7	1.0	1.3	-	7.9	0.7	0.5	-	0.7	-	9	0.9	1.7	-	-	1	0.7	1.4	0.9	0.8	0.9	0.7
Programme/Project Officer	4	0.4	0.6	0.2	0.5	0.2	1.3	-	-	0.3	-	-	-	0.9	3	0.3	-	2.9	-	1	0.7	-	-	0.4	0.4	0.7
Trainee	23	2.0	1.5	2.5	1.0	2.3	3.8	4.5	4.8	-	3.3	-	0.7	2.7	17	1.7	8.3	-	1.9	6	4.1	0.7	0.9	0.4	2.6	4.4
Total	1123	100	100	100	100	100	100	100	100	100	100	100	100	100	976	100	100	100	100	147	100	100	100	100	100	100

Table 6: Distribution of Employed Graduate's by Field of Study and Occupation

Fields of Study	Total No.	1	2	3	4	5	6	7	8	9	10	11	12	13	14	15	16	17	18	19	20	21	22.0	23	Total %			
		%	%	%	%	%	%	%	%	%	%	%	%	%	%	%	%	%	%	%	%	%	%	%		%		
UNIVERSITY OF MAURITIUS	976	5.3	13.8	4.5	7.2	10.3	1.1	10.0	1.0	3.4	1.7	1.1	0.8	24.4	4.1	0.2	1.0	2.3	0.6	2.4	1.6	0.9	0.3	1.7	100			
Agriculture	63	1.6	7.9	-	6.3	-	-	-	-	11	-	4.8	-	17.5	22.2	3.2	1.6	1.6	3.2	6.3	-	7.9	-	4.8	100			
Agricultural Biotechnology	11	-	9.1	-	9.1	-	-	-	-	18	-	-	-	9.1	36.4	-	-	-	-	9.1	-	-	-	-	9.1	100		
Agriculture sp Agribusiness	8	12.5	12.5	-	12.5	-	-	-	-	13	-	-	-	12.5	25.0	-	-	-	-	12.5	-	-	-	-	-	100		
Agriculture sp Aquaculture	8	-	12.5	-	12.5	-	-	-	-	-	-	-	-	12.5	25.0	-	12.5	-	13	-	-	-	13	-	-	100		
Agriculture sp Organic Farming	3	-	-	-	-	-	-	-	-	-	-	-	-	33.3	33.3	-	-	-	-	-	-	-	-	-	33	100		
Agriculture with Natural Resource Mgt	7	-	-	-	-	-	-	-	-	14	-	14.3	-	-	57.1	-	-	-	-	-	-	-	-	-	-	100		
Agriscience & Technology	6	-	-	-	-	-	-	-	-	17	-	-	-	16.7	-	16.7	-	17	17	16.7	-	-	-	-	-	100		
Food Science & Technology	7	-	14.3	-	-	-	-	-	-	14	-	14.3	-	42.9	-	-	-	-	-	-	-	-	14	-	-	100		
Food Science with Home Economics	7	-	14.3	-	-	-	-	-	-	-	-	-	-	57.1	14.3	-	-	-	-	-	-	-	14	-	-	100		
Food Science with Nutrition	6	-	-	-	16.7	-	-	-	-	17	-	16.7	-	-	-	-	-	-	-	-	-	33	-	17	100			
Engineering	290	0.7	7.6	-	1.7	32.4	3.8	33.4	-	1	0.7	-	0.7	7.9	3.4	-	-	0.7	1	2.8	1.0	0.7	0.3	-	100			
Business Informatics	8	-	12.5	-	-	25.0	-	-	-	-	-	-	-	12.5	12.5	-	-	13	-	25.0	-	-	-	-	-	100		
Chemical & Environmental	22	-	13.6	-	4.5	-	-	31.8	-	4.5	9.1	-	4.5	-	18.2	-	-	-	9.1	-	-	4.5	-	-	-	100		
Chemical & Renewable Energy	2	-	-	-	-	-	-	50.0	-	-	-	-	-	-	-	-	-	-	50	-	-	-	-	-	-	100		
Civil Engineering	25	-	8.0	-	-	-	-	92.0	-	-	-	-	-	-	-	-	-	-	-	-	-	-	-	-	-	100		
Computer Science & Eng	42	2.4	2.4	-	-	88.1	-	-	-	-	-	-	-	4.8	-	-	-	-	-	-	2.4	-	-	-	-	100		
Computer Science with Multimedia	3	-	-	-	-	33.3	-	-	-	-	-	-	-	-	-	-	-	-	-	-	-	33	-	-	-	100		
Electrical & Communication	1	-	-	-	-	-	-	100.0	-	-	-	-	-	-	-	-	-	-	-	-	-	-	-	-	-	100		
Electrical & Electronic	26	-	3.8	-	-	-	-	92.3	-	-	-	-	-	3.8	-	-	-	-	-	-	-	-	-	-	-	100		
Electronics&Communication	7	-	-	-	-	28.6	-	57.1	-	-	-	-	-	-	-	-	-	-	-	14.3	-	-	-	-	-	100		
Electronics&Computer Science	10	-	-	-	-	50.0	-	20.0	-	-	-	-	-	20.0	-	-	-	10	-	-	-	-	-	-	-	100		
ICT	19	-	5.3	-	-	63.2	-	-	-	-	-	-	5.3	10.5	-	-	-	-	-	5.3	-	-	5.3	-	-	100		
Information Systems	27	3.7	3.7	-	7.4	63.0	-	3.7	-	-	-	-	-	7.4	-	-	-	-	-	3.7	7.4	-	-	-	-	100		
Information Technology	25	-	8.0	-	4.0	68.0	-	4.0	-	-	-	-	-	12.0	-	-	-	-	-	4.0	-	-	-	-	-	100		
Manufacturing	1	-	-	-	-	-	-	-	-	-	-	-	-	-	100.0	-	-	-	-	-	-	-	-	-	-	100		
Mechanical	21	-	19.0	-	-	-	-	76.2	-	-	-	-	-	4.8	-	-	-	-	-	-	-	-	-	-	-	100		
Mechatronics	18	-	5.6	-	5.6	5.6	-	72.2	-	-	-	-	-	5.6	5.6	-	-	-	-	-	-	-	-	-	-	100		
Production & Operations Mgt	9	-	44.4	-	-	-	-	22.2	-	-	-	-	-	22.2	-	-	-	-	-	11.1	-	-	-	-	-	100		
Textile & Fashion Design	24	-	4.2	-	-	-	45.8	8.3	-	8.3	-	-	-	33.3	-	-	-	-	-	-	-	-	-	-	-	100		
Law&Management	214	18.2	30.4	9.8	9.8	1.4	-	0.5	4.7	5.1	-	-	-	8.9	0.5	-	-	0.9	-	2.8	3.3	0.5	-	3.3	100			
Accounting (minor Finance)	16	31.3	25.0	12.5	-	-	-	-	-	-	-	-	-	31.3	-	-	-	-	-	-	-	-	-	-	-	-	100	
Systems	5	60.0	20.0	-	-	-	-	-	-	-	-	-	-	-	-	-	-	-	-	-	20.0	-	-	-	-	100		
Accounting with Finance	4	25.0	50.0	-	-	-	-	-	-	-	-	-	-	25.0	-	-	-	-	-	-	-	-	-	-	-	100		
Accounting with Information Systems	18	38.9	22.2	16.7	5.6	5.6	-	-	-	-	-	-	-	11.1	-	-	-	-	-	-	-	-	-	-	-	100		
Finance	22	18.2	22.7	13.6	22.7	-	-	-	-	-	-	-	-	4.5	4.5	-	-	4.5	-	4.5	-	-	-	-	-	4.5	100	
Finance (Minor:Law)	7	57.1	14.3	28.6	-	-	-	-	-	-	-	-	-	-	-	-	-	-	-	-	-	-	-	-	-	100		
Finance with Law	17	23.5	41.2	17.6	-	-	-	-	-	5.9	-	-	-	-	-	-	-	-	-	5.9	-	-	-	-	-	5.9	100	
HRM	12	-	91.7	-	-	-	-	-	-	-	-	-	-	-	-	-	-	-	-	-	-	-	-	-	-	8.3	100	
Law	15	13.3	13.3	6.7	-	-	-	-	46.7	-	-	-	-	13.3	-	-	-	-	-	-	6.7	-	-	-	-	-	100	
Law&Mgt	18	5.6	33.3	-	11.1	-	-	-	16.7	-	-	-	-	11.1	-	-	-	-	-	5.6	16.7	-	-	-	-	-	100	
Management	38	7.9	23.7	5.3	18.4	2.6	-	2.6	-	13	-	-	-	7.9	-	-	-	-	-	2.6	5.3	2.6	-	-	-	7.9	100	
Mgt with Finance	11	18.2	36.4	27.3	9.1	-	-	-	-	-	-	-	-	-	-	-	-	-	-	-	9.1	-	-	-	-	-	100	
Mgt with Information Systems	13	15.4	30.8	15.4	23.1	7.7	-	-	-	7.7	-	-	-	-	-	-	-	-	-	-	-	-	-	-	-	100		
Mkg Mgt	9	11.1	22.2	-	22.2	-	-	-	-	22	-	-	-	-	-	-	-	11	-	-	-	-	-	-	-	11	100	
Tourism,Leisure & Recreational Mgt	9	-	33.3	-	-	-	-	-	-	22	-	-	-	33.3	-	-	-	-	-	-	11.1	-	-	-	-	-	100	
Mahatma Gandhi Institute	43	2.3	2.3	-	18.6	2.3	-	-	-	-	-	4.7	-	67.4	-	-	-	2.3	-	-	-	-	-	-	100			
Fine Arts	8	-	-	-	-	12.5	-	-	-	-	-	-	-	87.5	-	-	-	-	-	-	-	-	-	-	-	-	100	
Hindi	15	6.7	-	-	33.3	-	-	-	-	-	-	6.7	-	46.7	-	-	-	6.7	-	-	-	-	-	-	-	-	100	
Indian Philosophy	9	-	-	-	33.3	-	-	-	-	-	-	-	-	66.7	-	-	-	-	-	-	-	-	-	-	-	-	100	
Marathi	1	-	-	-	-	-	-	-	-	-	-	-	-	100.0	-	-	-	-	-	-	-	-	-	-	-	-	100	
Tamil	1	-	-	-	-	-	-	-	-	-	-	-	-	100.0	-	-	-	-	-	-	-	-	-	-	-	-	100	
Telegu	1	-	-	-	-	-	-	-	-	-	-	-	-	100.0	-	-	-	-	-	-	-	-	-	-	-	-	100	
Urdu	8	-	12.5	-	-	-	-	-	-	-	-	12.5	-	75.0	-	-	-	-	-	-	-	-	-	-	-	-	100	
Science	143	0.7	7.7	1.4	3.5	2.1	-	-	-	5.6	9.8	0.7	4.2	51.0	9.1	-	-	0.7	0.7	0.7	0.7	0.7	0.7	-	0.7	100		
Biology	31	-	3.2	-	6.5	-	-	-	-	6.5	9.7	-	6.5	45.2	12.9	-	-	3.2	3.2	-	-	3.2	-	-	3.2	-	-	100
Biology minor Aquatic and Environmental Sciences	3	-	-	-	-	-	-	-	-	-	-	-	-	33.3	33.3	-	-	-	-	33.3	-	-	-	-	-	-	100	
Chemistry	26	-	3.8	-	-	-	-	-	-	12	-	-	11.5	42.3	26.9													

Table 6: Distribution of Employed Graduate's by Field of Study and Occupation

Fields of Study	Total No.	1	2	3	4	5	6	7	8	9	10	11	12	13	14	15	16	17	18	19	20	21	22.0	23	Total	
		%	%	%	%	%	%	%	%	%	%	%	%	%	%	%	%	%	%	%	%	%	%	%	%	%
UNIVERSITY OF TECHNOLOGY, MAURITIUS	147	5.4	26.5	6.8	9.5	15.6	-	-	-	4.8	8.2	-	-	11.6	-	-	-	6.1	-	-	-	0.7	0.7	4.1	100	
School of Business Management and Finance	60	6.7	36.7	10.0	16.7	-	-	-	-	6.7	-	-	-	1.7	-	-	-	12	-	-	-	1.7	-	8.3	100	
Accounting with Business	4	50.0	25.0	-	-	-	-	-	-	-	-	-	-	25.0	-	-	-	-	-	-	-	-	-	-	100	
Banking & International Finance	25	8.0	12.0	20.0	32.0	-	-	-	-	4	-	-	-	-	-	-	-	12	-	-	-	-	4	-	8	100
HRM	27	-	59.3	3.7	3.7	-	-	-	-	7.4	-	-	-	-	-	-	-	15	-	-	-	-	-	-	11	100
Public Adm&Mgt	4	-	50.0	-	25.0	-	-	-	-	25	-	-	-	-	-	-	-	-	-	-	-	-	-	-	-	100
School of Innovative Technologies and Engineering	35	2.9	8.6	2.9	2.9	62.9	-	-	-	-	-	-	-	14.3	-	-	-	2.9	-	-	-	-	2.9	-	100	
Business Information Systems	6	16.7	-	-	-	66.7	-	-	-	-	-	-	-	-	-	-	-	-	-	-	-	-	16.7	-	100	
Computer Science with Network security	5	-	-	-	-	80.0	-	-	-	-	-	-	-	20.0	-	-	-	-	-	-	-	-	-	-	-	100
Information Technology Enabled Services	7	-	42.9	14.3	14.3	14.3	-	-	-	-	-	-	-	14.3	-	-	-	-	-	-	-	-	-	-	-	100
Mathematics	3	-	-	-	-	-	-	-	-	-	-	-	-	66.7	-	-	-	33	-	-	-	-	-	-	-	100
Software Eng	14	-	-	-	-	92.9	-	-	-	-	-	-	-	7.1	-	-	-	-	-	-	-	-	-	-	-	100
School of Sustainable Development and Technologies	52	5.8	26.9	5.8	5.8	1.9	-	-	-	5.8	23	-	-	21.2	-	-	-	1.9	-	-	-	-	-	1.9	100	
Occupational Health & Safety Mgt	13	-	-	-	7.7	-	-	-	-	-	92	-	-	-	-	-	-	-	-	-	-	-	-	-	-	100
Tourism&Hospitality Mgt	39	7.7	35.9	7.7	5.1	2.6	-	-	-	7.7	-	-	-	28.2	-	-	-	2.6	-	-	-	-	-	-	2.6	100
Total	1123	5.3	15.5	4.8	7.5	11.0	1.0	8.7	0.9	3.6	2.6	1.0	0.7	22.7	3.6	0.2	0.9	2.8	0.5	2.0	1.4	0.9	0.4	2	100	

- (1) Accounting
- (2)Adm/Mgt/HRM
- (3)Banking/Finance
- (4)Clerk
- (5)IT Professional
- (6)Textile/Fashion Designer
- (7)Engineer
- (8)Law/Legal
- (9)Marketing
- (10)Medical&Health Related
- (11)Research Officer/Assistant
- (12)Scientific Officer/Lab Assistant
- (13)Teacher/Lecturer
- (14)Technician
- (15)Agricultural Officer
- (16)Social Worker
- (17)PR/Communication
- (18)Environmental Officer
- (19)Other Professional
- (20) Consultant
- (21) Quality Officer
- (22) Programme/Project Officer
- (23) Trainee

Table 7: Graduates' Employment distributed by Sector

Sector	UoM & UTM		Gender		UoM		UTM		UoM								UTM					Cohort					
	Total								Faculty								School										
	No.	%	M	F	M	F	M	F	Agri	Eng	Law & Mgt	MGI	Science	SS & Hum	Total	SBMF	SITE	SSTD	Total	Total	2006	2007	2008	2009	2010		
			%	%	%	%	%	%	%	%	%	%	%	%	%	No.	%	%	%	No.	%	%	%	%	%		
Public	149	13.4	9.2	16.6	8.4	17.0	13.6	13.0	23.3	4.5	6.1	41.5	19.6	20.5	129	13.4	9.5	6.1	22.2	20	13.3	12.1	10.7	14.5	14.8	14.2	
Parastatal	122	11.0	10.3	11.5	11.4	12.4	4.9	4.3	10.0	10.8	4.7	17.1	19.6	15.5	115	12.0	6.3	6.1	1.9	7	4.7	14.9	11.6	11.2	9.2	9.7	
Local Authority	3	0.3	0.0	0.5	0.0	0.4	0.0	1.4	0.0	0.0	0.0	0.0	0.0	0.9	2	0.2	0.0	0.0	1.9	1	0.7	0.0	0.0	0.4	0.4	0.4	
Private	821	74.0	79.0	70.2	79.0	69.0	79.0	79.7	66.7	84.0	87.4	39.0	59.4	61.6	702	73.1	81.0	87.9	72.2	119	79.3	70.9	76.4	72.6	74.7	74.5	
Self-employed	15	1.4	1.5	1.3	1.3	1.2	2.5	1.4	0.0	0.7	1.9	2.4	1.4	1.4	12	1.3	3.2	0.0	1.9	3	2.0	2.1	1.3	1.2	0.9	1.1	
Total	1110	100	100	100	100	100	100	100	100	100	100	100	100	100	960	100	100	100	150	100	100	100	100	100	100	100	100

Table 8: Employed Graduates* requiring at least a degree distributed by Programme of study and Cohort

Fields of Study	Year	2006	2007	2008	2009	2010	Total
		%	%	%	%	%	%
Agriculture		100	72.7	66.7	46.2	50.0	61.0
Agricultural Biotechnology		-	-	50.0	25.0	33.3	36.4
Agriculture sp Agribusiness		-	50.0	-	-	-	25.0
Agriculture sp Aquaculture		-	-	-	75.0	33.3	57.1
Agriculture sp Organic Farming		-	100	-	-	-	100
Agriculture with Natural Resource Mgt		-	-	42.9	-	-	42.9
Agriscience & Technology		-	75.0	100	-	100	83.3
Food Science & Technology		-	-	100	100	-	100
Food Science with Home Economics		100	-	75.0	-	-	83.3
Food Science with Nutrition		-	-	-	-	75.0	75.0
Engineering		88.7	95.8	90.0	93.3	88.1	91.1
Business Informatics		50.0	100	33.3	-	-	62.5
Chemical & Environmental		60.0	100	50.0	66.7	100	81.0
Chemical & Renewable Energy		-	-	-	-	50.0	50.0
Civil Engineering		100	100	100	100	100	100
Computer Science & Eng		100	100	91.7	100	100	97.6
Computer Science with Multimedia		33.3	-	-	-	-	33.3
Electrical & Electronic		100	100	100	100	85.7	96.2
Electronics&Communication		-	100	-	100	100	100
Electronics&Computer Science		50.0	-	100	100	100	90.0
ICT		100	100	100	100	100	100
Information Systems		-	100	80.0	88.9	100	88.5
Information Technology		100	100	100	100	50.0	95.5
Manufacturing		-	100	-	-	-	100
Mechanical		100	100	100	100	100	100
Mechatronics		100	66.7	100	75.0	83.3	84.2
Production & Operations Mgt		-	-	100	75.0	100	88.9
Textile &Fashion Design		100	80.0	100	100	50.0	81.0
Law&Management		94.7	79.1	82.1	76.0	76.8	79.7
Accounting (minor Finance)		-	-	80.0	100	100	93.3
Accounting minor Information Systems		-	-	0.0	-	100	80.0
Accounting with Finance		-	100	-	100	-	100
Accounting with Information Systems		100	100	75.0	85.7	-	88.2
Finance		100	75.0	80.0	-	75.0	68.2
Finance (Minor:Law)		-	-	-	100	100	100
Finance with Law		100	100	100	75.0	-	94.1
HRM		-	-	-	100	100	100
Law		100	100	100	100	100	100
Law&Mgt		100	75.0	66.7	100	66.7	77.8
Management		80.0	62.5	60.0	75.0	50.0	61.1
Mgt with Finance		-	50.0	100	60.0	100	72.7
Mgt with Information Systems		-	66.7	100	50.0	50.0	75.0
Mkg Mgt		-	-	-	66.7	66.7	66.7
Tourism,Leisure & Recreational Mgt		-	60.0	-	66.7	-	62.5
Mahatma Gandhi Institute		50.0	84.6	100.0	66.7	10.0	57.1
Fine Arts		-	100	-	100	-	100
Hindi		50.0	100	100	33.3	-	50.0
Indian Philosophy		-	71.4	-	-	-	55.6
Marathi		-	-	-	-	100	100
Telegu		-	-	-	-	-	0.0
Urdu		-	-	-	100	-	20.0
School of Business Management and Finance		75.0	60.0	75.0	57.9	50.0	59.3
Accounting with Business		-	-	-	100	100	100
Banking & International Finance		-	60.0	75.0	25.0	50.0	57.1
HRM		-	-	-	61.5	41.7	52.0
Public Adm&Mgt		75.0	-	-	-	-	75.0

Table 8: Employed Graduates* requiring at least a degree distributed by Programme of study and Cohort (cont.)

Fields of Study	Year	2006	2007	2008	2009	2010	Total
		%	%	%	%	%	%
Science		86.2	85.3	75.0	90.0	75.0	82.4
Biology		85.7	100	37.5	100	100	79.3
Biology minor Aquatic and Environmental Sciences		-	33.3	-	-	-	33.3
Chemistry		80.0	87.5	100	60.0	33.3	76.9
Chemistry with Business Mgt		-	-	-	-	-	-
Marine Science & Tech		-	-	-	-	-	-
Mathematics		100	75.0	100	100	100	95.0
Mathematics with Computer Science		100	75.0	100	100	100	92.9
Medical science		-	100	-	-	100	100
Molecular Biology		-	100	-	-	-	100
Physics		80.0	100	75.0	100	-	83.3
Physics with Computing		100	100	100.0	100	100	100
Physics with Electronics		-	100	66.7	100	-	85.7
Physiotherapy		-	-	100	100	50.0	71.4
School of Innovative Technologies and Engineering		100	100.0	77.8	75.0	62.5	81.3
Business Information Systems		100	100	100	-	50.0	83.3
Computer Science with Network security		-	100	100	-	100	100
Information Technology Enabled Services		-	-	60.0	-	-	60.0
Mathematics		-	-	-	-	-	-
Software Eng		100	100	100	75.0	100	92.9
Social Science & Humanities		78.3	76.4	76.3	57.6	63.3	70.8
Business Economics with Information Systems		-	80.0	60.0	25.0	75.0	61.1
Economics		66.7	80.0	100	100	100	85.7
Economics with Accounting		-	-	60.0	-	33.3	44.4
Economics with Management		-	-	60.0	50.0	75.0	63.6
Economics & Finance		100	75.0	100	50.0	83.3	83.3
English		100	100	100	-	75.0	95.0
French		83.3	80.0	75.0	100	66.7	79.2
History with International Relations		-	66.7	75.0	-	-	50.0
History with Social Studies		-	50.0	0.0	33.3	66.7	45.5
Joint Humanities		100	50.0	80.0	100	80.0	82.4
Political Science		-	-	50.0	50.0	-	28.6
Psychology		-	-	-	-	100	50.0
Social Science with sp. Political Science		100	50.0	-	-	-	50.0
Social Science with sp. Psychology		25.0	66.7	100	-	-	50.0
Social Science with sp. Sociology		-	85.7	-	-	-	85.7
Social Work		-	-	-	50.0	-	50.0
Sociology		-	-	100	100	60.0	84.6
Statistics with Computer Science		-	100.0	100	100	-	77.8
Statistics with Economics		-	-	100	50.0	-	66.7
School of Sustainable Development and Tourism		-	50.0	57.1	36.4	36.8	40.0
Occupational Health & Safety Mgt		-	-	-	-	-	0.0
Tourism & Hospitality Mgt		-	50.0	57.1	44.4	50.0	48.5
Total		85.7	82.9	79.4	73.6	67.3	76.9

* Full Time Employment

Table 9: Employed Graduates* requiring a degree in the relevant field of Study distributed by Programme of Study and Cohort

Programme of Study	2006	2007	2008	2009	2010	Total
Agriculture	50.0	63.6	47.6	46.2	41.7	49.2
Agricultural Biotechnology	-	-	25.0	25.0	33.3	27.3
Agriculture sp Agribusiness	-	50.0	-	-	-	25.0
Agriculture sp Aquaculture	-	-	-	75.0	33.3	57.1
Agriculture sp Organic Farming	-	100.0	-	-	-	100.0
Agriculture with Natural Resource Mgt	-	-	28.6	-	-	28.6
Agriscience & Technology	-	50.0	100.0	-	-	50.0
Food Science & Technology	-	-	60.0	100.0	-	71.4
Food Science with Home Economics	50.0	-	75.0	-	-	66.7
Food Science with Nutrition	-	-	-	-	75.0	75.0
Engineering	84.9	89.6	86.7	91.7	84.7	87.5
Business Informatics	50.0	66.7	33.3	-	-	50.0
Chemical & Environmental	60.0	87.5	50.0	66.7	100	76.2
Chemical & Renewable Energy	-	-	-	-	50.0	50.0
Civil Engineering	100	100	100	100	100	100
Computer Science & Eng	100	100	83.3	100	90.0	92.9
Computer Science with Multimedia	33.3	-	-	-	-	33.3
Electrical & Electronic	100	100	100	100	85.7	96.2
Electronics&Communication	-	100	-	100	100	100
Electronics&Computer Science	50.0	-	100	100	100	90.0
ICT	100	66.7	100	100	100	94.7
Information Systems	-	100	80.0	88.9	100	88.5
Information Technology	77.8	100	100	100	50.0	86.4
Manufacturing	-	100	-	-	-	100
Mechanical	100	100	100	100	100	100
Mechatronics	100	66.7	50.0	75.0	83.3	78.9
Production & Operations Mgt	-	-	100	75.0	100.0	88.9
Textile &Fashion Design	100	80.0	100	75.0	33.3	71.4
Law&Management	89.5	69.0	74.4	66.0	69.1	71.2
Accounting (minor Finance)	-	-	80.0	100	100	93.3
Accounting minor Information Systems	-	-	0.0	-	100	80.0
Accounting with Finance	-	100	-	100	-	100
Accounting with Information Systems	100	100	75.0	85.7	-	88.2
Finance	100	25.0	60.0	0.0	75.0	54.5
Finance (Minor:Law)	-	-	-	100	100	100
Finance with Law	100	100	100	50.0	-	88.2
HRM	-	-	-	100	80.0	91.7
Law	100	100	75.0	33.3	100	78.6
Law&Mgt	100	75.0	66.7	100	50.0	72.2
Management	60.0	50.0	40.0	50.0	30.8	42.9
Mgt with Finance	-	50.0	100	60.0	100	72.7
Mgt with Information Systems	-	-	100	50.0	50.0	63.6
Mkg Mgt	-	-	-	33.3	66.7	55.6
Tourism,Leisure & Recreational Mgt	-	60.0	-	66.7	-	62.5
Mahatma Gandhi Institute	50.0	84.6	100.0	66.7	10.0	57.1
Fine Arts	-	100	-	100	-	100
Hindi	50.0	100	100	33.3	-	50.0
Indian Philosophy	-	71.4	-	-	-	55.6
Marathi	-	-	-	-	100	100
Telegu	-	-	-	-	-	-
Urdu	-	-	-	100	-	20.0
School of Business Management and Finance	75.0	60.0	75.0	55.6	47.1	57.7
Accounting with Business	-	-	-	100	100	100
Banking & International Finance	-	60.0	75.0	25.0	50.0	57.1
HRM	-	-	-	58.3	36.4	47.8
Public Adm&Mgt	75.0	-	-	-	-	75.0
Science	65.5	67.6	75.0	85.0	65.0	71.0
Biology	57.1	87.5	37.5	100	66.7	65.5
Biology minor Aquatic and Environmental Sciences	-	33.3	-	-	-	33.3
Chemistry	80.0	50.0	100	60.0	33.3	65.4
Chemistry with Business Mgt	-	-	-	-	-	-
Marine Science & Tech	-	-	-	-	-	-
Mathematics	66.7	75.0	100	100	75.0	80.0

Table 9: Employed Graduates* requiring a degree in the relevant field of Study distributed by Programme of Study and Cohort (Cont.)

Programme of Study	2006	2007	2008	2009	2010	Total
Mathematics with Computer Science	-	50.0	100	100	100	71.4
Medical science	-	100	-	-	100	100
Molecular Biology	-	-	-	-	-	0.0
Physics	80.0	100	75.0	100	-	83.3
Physics with Computing	100	100	100	100	100	100
Physics with Electronics	-	100	66.7	100	-	85.7
Physiotherapy	-	-	100	-	50.0	57.1
School of Innovative Technologies and Engineering	100	100	77.8	75.0	62.5	81.3
Business Information Systems	100	100	100	-	50.0	83.3
Computer Science with Network security	-	100	100	-	100	100
Information Technology Enabled Services	-	-	60.0	-	-	60.0
Mathematics	-	-	-	-	-	0.0
Software Eng	100	100	100	75.0	100	92.9
Social Studies & Humanities	78.3	67.3	66.1	48.5	53.1	62.1
Business Economics with Information Systems	-	80.0	40.0	0.0	75.0	50.0
Economics	66.7	80.0	100	100	100	85.7
Economics with Accounting	-	-	60.0	0.0	33.3	44.4
Economics with Management	-	-	60.0	50.0	75.0	63.6
Economics & Finance	100	75.0	100	25.0	66.7	75.0
English	100	83.3	100	-	50.0	85.0
French	83.3	80.0	50.0	100	66.7	75.0
History with International Relations	-	-	25.0	-	-	10.0
History with Social Studies	-	25.0	-	33.3	33.3	27.3
Joint Humanities	100	50.0	60.0	100	80.0	76.5
Political Science	-	-	-	-	-	0.0
Psychology	-	-	-	-	50.0	25.0
Social Science with sp. Political Science	100	50.0	-	-	-	50.0
Social Science with sp. Psychology	25.0	33.3	100	-	-	37.5
Social Science with sp. Sociology	-	85.7	-	-	-	85.7
Social Work	-	-	-	50.0	-	50.0
Sociology	-	-	100	100	40.0	76.9
Statistics with Computer Science	-	100	100	100	-	77.8
Statistics with Economics	-	-	100	50.0	-	66.7
School of Sustainable Development and Tourism	-	50.0	57.1	36.4	26.3	35.0
Occupational Health & Safety Mgt	-	-	-	-	-	0.0
Tourism & Hospitality Mgt	-	50.0	57.1	44.4	35.7	42.4
Grand Total	78.6	74.1	73.0	68.8	60.6	70.2

* Full Time Employment

Table 10: Distribution of Unemployed graduates by Programme of Study and Cohort

Year	Total	2006	2007	2008	2009	2010
Programme of Study	%	%	%	%	%	%
Agriculture	17.0	-	8.3	3.7	6.3	40.0
Agricultural Biotechnology	26.3	-	-	-	-	50.0
Agriculture sp Agribusiness	18.2	-	20.0	-	20.0	-
Agriculture sp Aquaculture	30.8	-	-	-	-	44.4
Agriculture sp Organic Farming	-	-	-	-	-	-
Agriculture with Natural Resource Mgt	-	-	-	-	-	-
Agriscience & Technology	33.3	-	-	-	-	75.0
Food Science & Technology	-	-	-	-	-	-
Food Science with Home Economics	10.0	-	-	14.3	-	-
Food Science with Nutrition	-	-	-	-	-	-
Engineering	3.5	-	1.9	4.5	2.9	7.5
Business Informatics	-	-	-	-	-	-
Chemical & Environmental	6.9	-	-	33.3	-	20.0
Chemical & Renewable Energy	-	-	-	-	-	-
Civil Engineering	3.6	-	-	12.5	-	-
Computer Science & Eng	-	-	-	-	-	-
Computer Science with Multimedia	-	-	-	-	-	-
Electrical & Communication	-	-	-	-	-	-
Electrical & Electronic	3.6	-	-	-	-	12.5
Electronics&Communication	-	-	-	-	-	-
Electronics&Computer Science	-	-	-	-	-	-
ICT	-	-	-	-	-	-
Information Systems	6.9	-	-	-	-	40.0
Information Technology	8.0	-	16.7	33.3	-	-
Manufacturing	-	-	-	-	-	-
Mechanical	4.2	-	-	-	-	16.7
Mechatronics	4.8	-	-	-	20.0	-
Production & Operations Mgt	-	-	-	-	-	-
Textile &Fashion Design	3.7	-	-	-	14.3	-
Law&Manangement	7.2	7.4	8.0	4.3	6.9	8.7
Accounting (minor Finance)	-	-	-	-	-	-
Accounting minor Information Systems	-	-	-	-	-	-
Accounting with Finance	-	-	-	-	-	-
Accounting with Information Systems	-	-	-	-	-	-
Finance	11.5	-	20.0	-	20.0	20.0
Finance (Minor:Law)	-	-	-	-	-	-
Finance with Law	-	-	-	-	-	-
HRM	-	-	-	-	-	-
Law	11.1	25.0	-	-	20.0	-
Law&Mgt	4.5	-	-	-	-	14.3
Management	13.5	14.3	9.1	11.1	-	19.0
Mgt with Finance	-	-	-	-	-	-
Mgt with Information Systems	13.3	-	-	16.7	33.3	-
Marketing Mgt	-	-	-	-	-	-
Tourism,Leisure & Recreational Mgt	25.0	-	28.6	-	25.0	-
Mahatma Gandhi Institute	30.9	-	17.6	33.3	8.3	55.2
Fine Arts	-	-	-	-	-	-
Hindi	29.2	-	33.3	33.3	25.0	57.1
Indian Philosophy	37.5	-	22.2	-	-	57.1
Marathi	50.0	-	-	-	-	50.0
Tamil	-	-	-	-	-	-
Telegu	-	-	-	-	-	-
Urdu	43.8	-	-	-	-	63.6

Table 10: Distribution of Unemployed graduates by Programme of Study and Cohort (cont.)

Year	Total	2006	2007	2008	2009	2010
Programme of Study	%	%	%	%	%	%
School of Business Management and Finance	9.3	-	-	10.0	8.3	13.8
Accounting with Business	20.0	-	-	-	33.3	-
Banking & International Finance	3.4	-	-	10.0	-	-
HRM	13.9	-	-	-	6.7	19.0
Public Adm&Mgt	-	-	-	-	-	-
Science	15.5	3.2	2.6	13.5	10.3	40.0
Biology	13.5	-	10.0	-	25.0	42.9
Biology minor Aquatic and Environmental Sciences	-	-	-	-	-	-
Biology minor Environmental Protection	100	-	-	-	-	100
Biology minor Environmental Studies	-	-	-	-	-	-
Chemistry	15.2	-	-	37.5	14.3	20.0
Chemistry with Business Mgt	-	-	-	-	-	-
Marine Science & Tech	50.0	-	-	-	-	50.0
Mathematics	-	-	-	-	-	-
Mathematics with Computer Science	11.1	25.0	-	-	-	25.0
Medical Science	-	-	-	-	-	-
Medecine	-	-	-	-	-	-
Molecular Biology	-	-	-	-	-	-
Physics	23.5	-	-	-	33.3	100
Physics with Computing	-	-	-	-	-	-
Physics with Electronics	27.3	-	-	-	-	100
Physiotherapy	18.8	-	-	28.6	-	14.3
School of Innovative Technologies and Engineering	8.7	-	-	-	25.0	16.7
Business Information Systems	-	-	-	-	-	-
Computer Science with Network security	-	-	-	-	-	-
Information Technology Enabled Services	22.2	-	-	-	66.7	-
Mathematics	33.3	-	-	-	-	33.3
Software Eng	-	-	-	-	-	-
Social Studies & Humanities	16.8	-	6.2	9.7	30.9	27.2
Business Economics with Information Systems	10.0	-	-	-	20.0	20.0
Economics	11.8	-	-	50.0	-	20.0
Economics with Accounting	-	-	-	-	-	-
Economics with Management	-	-	-	-	-	-
Economics & Finance	7.7	-	-	-	33.3	-
English	20.0	-	12.5	12.5	66.7	28.6
French	8.8	-	-	-	75.0	-
History with Heritage Studies	100	-	100	-	-	-
History with International Relations	33.3	-	-	14.3	33.3	62.5
History with Social Studies	38.1	-	20.0	50.0	40.0	42.9
Joint Humanities	16.7	-	-	16.7	25.0	22.2
Political Science	46.7	-	-	25.0	60.0	50.0
Psychology	44.4	-	-	-	100	50.0
Social Science with sp. Political Science	-	-	-	-	-	-
Social Science with sp. Psychology	9.1	-	20.0	-	-	-
Social Science with sp. Sociology	-	-	-	-	-	-
Social Work	20.0	-	-	-	20.0	-
Sociology	13.3	-	-	-	-	28.6
Statistics with Computer Science	-	-	-	-	-	-
Statistics with Economics	-	-	-	-	-	-
School of Sustainable Development and Tourism	12.9	-	-	10.0	6.3	20.0
Occupational Health & Safety Mgt	-	-	-	-	-	-
Tourism & Hospitality Mgt	15.7	-	-	10.0	8.3	26.1
Total Unemployed	11.7	1.8	5.5	7.4	11.5	23.2

Table 11: Unemployment and Underemployment Rates by Programme of Study

Programme of Study	Unemployment Rate (%)		Underemployment Rate (%)	
Biology minor Environmental Protection	2	100	-	-
History with Heritage Studies	1	100	-	-
Marathi	1	50.0	-	-
Marine Science & Tech	4	50.0	1	50
Political Science	7	46.7	5	71.4
Psychology	4	44.4	2	50
Urdu	7	43.8	4	57.1
History with Social Studies	8	38.1	6	50
Indian Philosophy	6	37.5	4	44.4
Agriscience & Technology	3	33.3	1	16.7
History with International Relations	2	33.3	5	50
Mathematics	7	33.3	3	13.7
Agriculture sp Aquaculture	4	30.8	3	42.9
Hindi	7	29.2	7	53.8
Physics with Electronics	3	27.3	1	14.3
Agricultural Biotechnology	5	26.3	7	63.6
Tourism, Leisure & Recreational Mgt	3	25.0	3	37.5
Physics	4	23.5	2	16.7
Information Technology Enabled Services	2	22.2	2	33.3
Accounting with Business	1	20.0	-	-
English	6	20.0	1	5
Social Work	1	20.0	2	50
Physiotherapy	3	18.8	2	20
Agriculture sp Agribusiness	2	18.2	6	75.0
Joint Humanities	4	16.7	3	16.7
Tourism&Hospitality Mgt	8	15.7	17	50
Chemistry	5	15.2	6	23.1
HRM	5	13.9	12	32.4
Biology	5	13.5	6	20
Management	7	13.5	14	38.9
Mgt with Information Systems	2	13.3	3	33.3
Sociology	2	13.3	2	15.4
Economics	2	11.8	2	14.3
Finance	3	11.5	7	30.4
Law	2	11.1	-	-
Mathematics with Computer Science	2	11.1	1	7.1
Business Economics with Information Systems	1	10.0	7	38.9
Food Science with Home Economics	2	10.0	1	16.7
Social Science with sp. Psychology	1	9.1	4	50
French	3	8.8	5	18.5
Information Technology	2	8.0	1	4.3
Economics& Finance	2	7.7	4	16.7

Table 11: Unemployment and Underemployment Rates by Programme of Study

Programme of Study	Unemployment Rate (%)		Underemployment Rate (%)	
Chemical & Environmental	2	6.9	4	19
Information Systems	2	6.9	3	11.1
Mechatronics	1	4.8	3	15.8
Law&Mgt	1	4.5	4	22.2
Mechanical	1	4.2		
Textile & Fashion Design	1	3.7	4	18.2
Civil Engineering	1	3.6		-
Electrical & Electronic	1	3.6	1	3.8
Banking & International Finance	1	3.4	10	45.5
Telegu	-	-	1	100
Chemistry with Business Mgt	-	-	1	100
Occupational Health & Safety Mgt	-	-	11	91.7
Computer Science with Multimedia	-	-	2	66.7
Biology minor Aquatic and Environmental Sciences	-	-	2	66.7
Agriculture with Natural Resource Mgt	-	-	4	57.1
Economics with Accounting	-	-	5	55.6
Social Science with sp. Political Science	-	-	3	50.0
Chemical & Renewable Energy	-	-	3	50.0
Business Informatics	-	-	3	37.5
Economics with Management	-	-	4	36.4
Statistics with Economics	-	-	1	33.3
Marketing Mgt	-	-	3	27.3
Public Adm&Mgt	-	-	1	25.0
Mgt with Finance	-	-	3	25.0
Food Science with Nutrition	-	-	1	25.0
Statistics with Computer Science	-	-	2	22.2
Accounting minor Information Systems	-	-	1	20.0
Business Information Systems	-	-	1	16.7
Accounting with Information Systems	-	-	3	16.7
Social Science with sp. Sociology	-	-	1	14.3
Production & Operations Mgt	-	-	1	11.1
Electronics&Computer Science	-	-	1	10.0
Software Eng	-	-	1	7.1
Accounting (minor Finance)	-	-	1	6.3
Finance with Law	-	-	1	5.9
Computer Science & Eng	-	-	1	2.4